

# Premium 22

## Charging Station for Electric Vehicles



MENNEKES charging station for use in public areas.

- According to Mode 3 (IEC 61851)
- Charging socket type 2
- Charging up to 22kW
- Enclosure made of sheet steel, galvanised, primed and powder-coated

**Note:** This data sheet is valid for the following product range:  
313610, 1313610SW, 1313610SI, 1313610GE

**MENNEKES**  
Elektrotechnik GmbH & Co. KG  
Spezialfabrik für Steckvorrichtungen  
Aloys-Mennekes-Str. 1  
D-57399 Kirchhundem

Tel. +49 (0) 27 23 / 41-1  
Fax +49 (0) 27 23 / 41-2 14  
E-Mail [info@MENNEKES.de](mailto:info@MENNEKES.de)  
Internet [www.MENNEKES.de](http://www.MENNEKES.de)

Service by  
**MENNEKES®.**  
Always well  
informed.

Technical changes reserved

Art.-Nr. **313610**

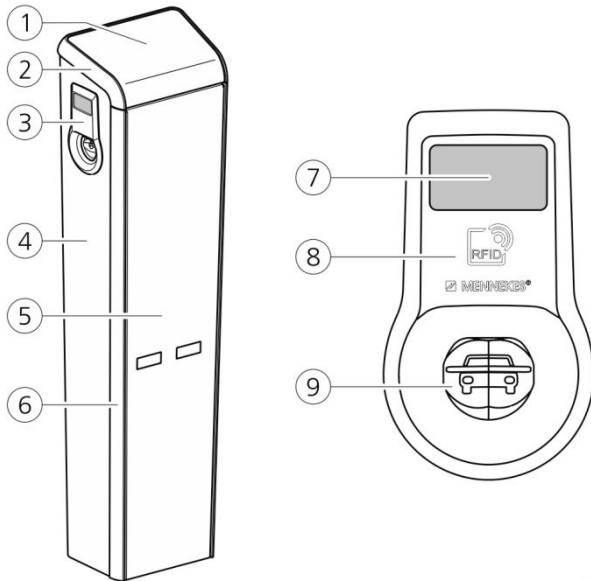
## Features

- MENNEKES charging station for use in public areas for recharging electric vehicles according to IEC 61851
- Completely wired - ready for grid connection
- Auto-switch function for automatic switching between 20 A and 32 A charging cables
- Status information by text display
- Terminals for the purpose of connecting additional charging systems via RS485 bus
- Heated charging socket (below approx. 3° C)
- One hand operation
- Integrated MCB's and RCD's
- Cable release in case of grid failure
- Charging column with temperature controlled ventilation system
- Enclosure made of sheet steel, galvanised, primed and powder-coated

## Technical Data

|                        |  |
|------------------------|--|
| Type                   | Premium 22   |
| Part number            | 313610   |
| Nominal voltage        | 400 V AC $\pm$ 10%   |
| Nominal frequency      | 50Hz   |
| Nominal current        | 32A  |
| Maximum backup fuse    | 80A  |
| Charging power Mode 3  | 22kW   |
| Max. charging current  | 32A / 3 ph   |
| Supply line            | 5 x 2 x 50 mm <sup>2</sup> ,<br>rigid 0,75 – 35 mm <sup>2</sup> ,<br>flexibel 0,75 – 50 mm <sup>2</sup> ,<br>tightening torque:<br>3,2 – 3,7 Nm              |
| RS485 bus              | 2x2 terminal points and 2 shield<br>contacts for shielded twisted-pair<br>cables.<br>rigid 0,08 - 6 mm <sup>2</sup> ,<br>flexibel 0,08 - 4 mm <sup>2</sup> . |
| Protection class       | IP 44  |
| Dimensions (H x W x D) | 1380 x 350 x 250 mm  |
| Weight                 | 73 kg  |

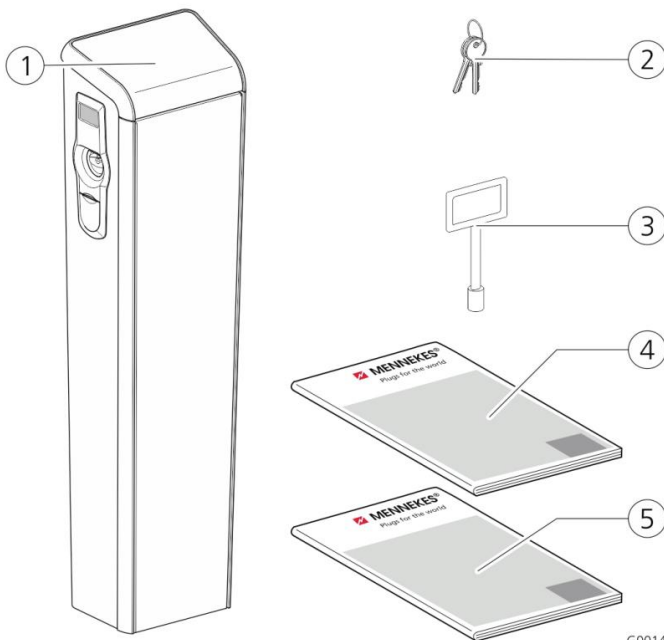
## Assembly



- ① Cover panel
- ② Cover
- ③ Socket panel (2x)
- ④ Basic housing
- ⑤ Front panel
- ⑥ Profile strips
- ⑦ Plain text display for operator guidance
- ⑧ RFID reader
- ⑨ Type 2 charging socket (Mode 3) with status indicator lamps

G0

## Delivery Contents



- ① Charging column
- ② Key set for releasing the turning lever
- ③ Key for releasing the cover plate
- ④ Operating manual for charging column
- ⑤ Operating manual for MENNEKES ACU (only for Smart (S)M 22)

G00147